



*Excellence in integrated optics*

XiO Photonics bv  
PO Box 1254  
7500 AH Enschede  
The Netherlands

Phone: +31 53 438 6688  
Fax: +31 53 201 1303  
info@xiophotonics.com  
www.xiophotonics.com

# Optical Product Portfolio

*Passive components*

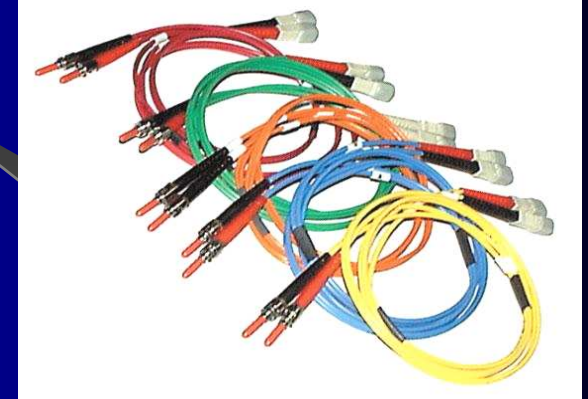
# Connectivity Products



Connectors



Adapters



Cable Assemblies

- Available in combinations of SC, ST, FC, LC, MU, MTRJ, ESCON, FDDI, E2000
- All fibre types and cable types – Simplex, Duplex, Flat Duplex, Minizip, 900µm tight and semi-tight
- All endface finishes – SPC, UPC & APC
- Normal, Tunable and Tuned
- Manufacturing facilities in India (for volume) and Sweden (for quick turn around)
- GR-326 qualified

# Splitting/ Branching Products



PLC Splitters



Modular Versions



FBT Splitters

- PLC Splitters:
  - 1X4, 1X8, 1X16, 1X32 & 1X64
  - Ruggedized and Modular versions available
- FBT\* Splitters – MM & SM
  - Truly fused solution for 1X2, 1X3 & 1X4
  - Any splitting ratios – Equal Split to 99:1 tap couplers
  - Cascaded tree versions up to 1X32
  - Ruggedized and Modular versions

GR 1209 &  
1221  
qualified

Custom fibre fan-out  
assemblies available

\*: FBT = Fused Biconic Taper

Excellence in integrated optics

# Attenuation Family Products



Build-out  
Attenuators



Attenuated  
Patchcords



Mechanical VOA

- BOA: Available in SC & FC versions – MU & LC under development
- Attenuated Patchcords: All connector configurations
- Mechanical Inline VOA: Un-connectorised and connectorised versions available
- Attenuation range - 0 to 30dB
- GR-910 qualified
- Tested over 1310 & 1550  $\pm$  40nm range

# Special Products



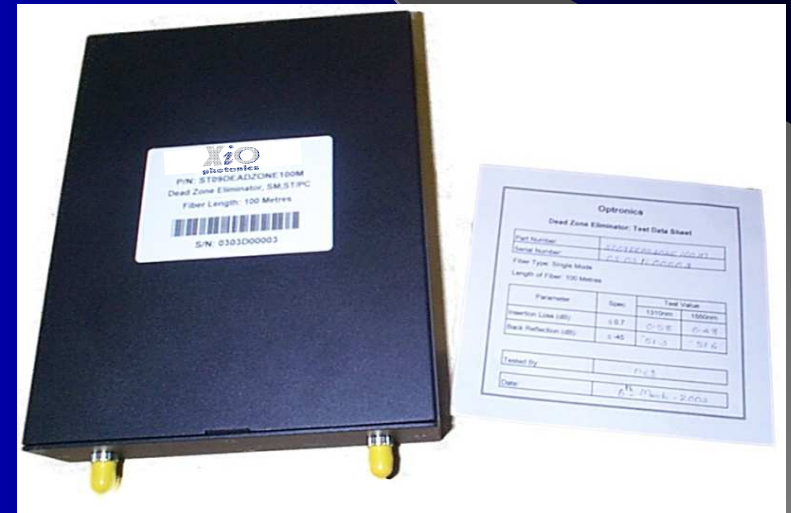
Preterm Assemblies



Mode Conditioner

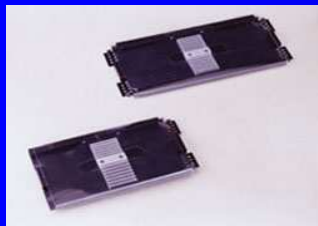
## Other Products:

- Bend Insensitive Products – FBT Splitters, Patchcords & pigtailed
- Optical Terminators
- Loop Back Assemblies & Attenuators
- Secure Keyed LC & MTRJ



Dead Zone Eliminators

# Fibre Management Products



Splice Tray



Loaded\* 1U patchpanel  
Fixed, Sliding & Swing-out  
versions



Splice Bridge



Splice Protectors



Loaded\* 3U panel



3U chassis



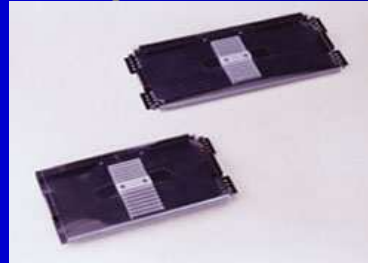
19/ 21" racks

Excellence in integrated optics

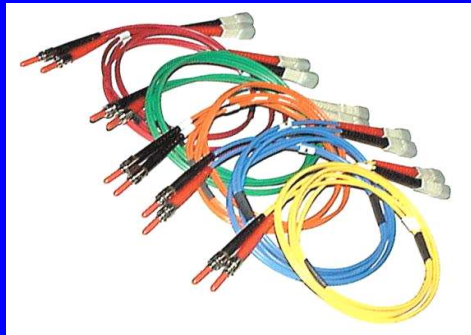
# Fibre Passives & Connectivity in Metro/ Distribution – Telecom/ FTTH



Adapters



Splice Trays



Patchcords



Fibre Distribution Hub



Dome/ Optical Enclosures



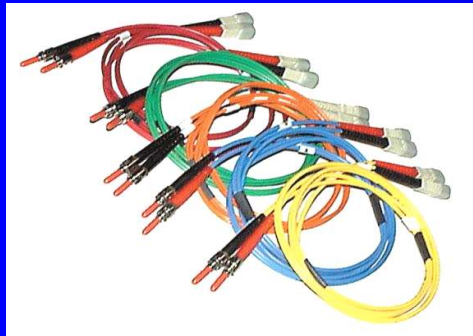
Splitter Modules



Splitters

Excellence in integrated optics

# FTTH – The Last Mile and Premises



Cable Assemblies



Adapters



Splice Trays



Splitters



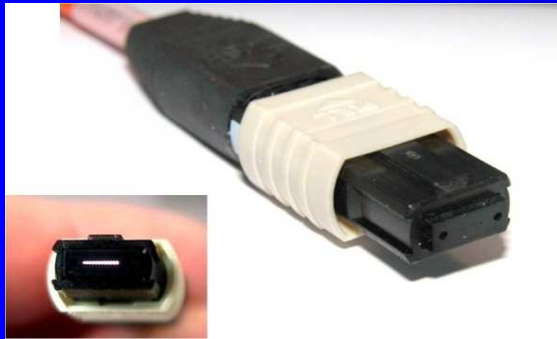
Splitter Modules



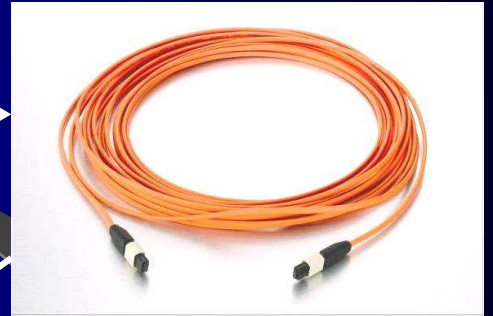
Premises/ Home/ Office Enclosures

Excellence in integrated optics

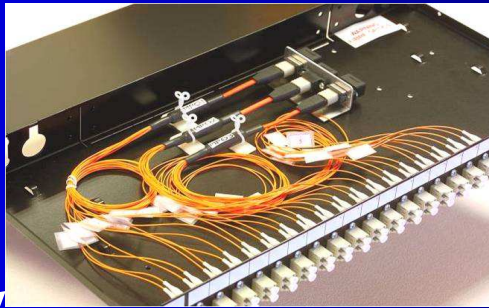
# MPO Optical Solution



MPO Connector



MPO Patchcord



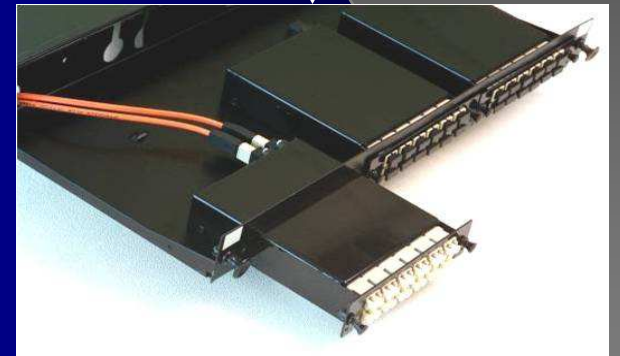
MPO Breakout Panel



MPO Breakout



MPO Module



MPO Modular Panel

Excellence in integrated optics

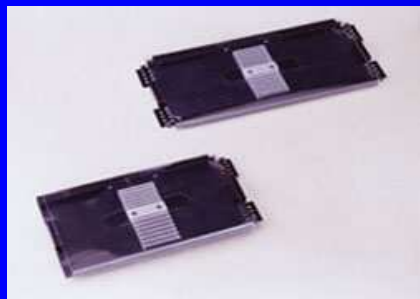
# Basic Fibre Management/ Routing Hardware



19"/ 21" Cable ring



Fibre Management Spool



MPO Breakout Panel



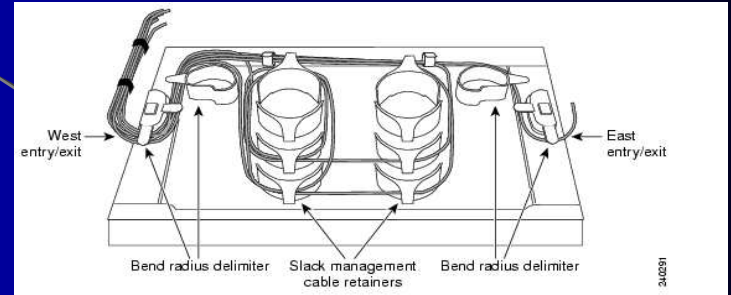
CMW-KIT



CMWB



Vertical cable routers



Bend Radius/ Slack Management Solutions



Cable duct

Excellence in integrated optics

# RoHS & WEEE directives

- All XiO Photonics products are RoHS and WEEE compliant.
  - RoHS directive
    - The chemicals in question have been defined as lead, cadmium, mercury, hexavalent chromium, polybrominated biphenyl (PBB) and polybrominated diphenyl ether (PBDE) flame retardants.
  - WEEE directive
    - The WEEE Directive encourages and sets criteria for the collection, treatment, recycling and recovery of waste electrical and electronic equipment.

# Contact information



## **XiO Photonics**

PO Box 1254  
NL-7500 BG Enschede  
The Netherlands  
P: +31 53 483 6688  
F: +31 53 201 1303  
[info@xiophotonics.com](mailto:info@xiophotonics.com)  
[www.xiophotonics.com](http://www.xiophotonics.com)

## **Visiting & delivery**

BTC building, Ph. 7b  
Hengelosestraat 705  
NL-7521 PA Enschede  
The Netherlands.

Excellence in integrated optics